

ARCHITECTURE, DESIGN, INTERIORS + PROPERTY

identity[®]

ISSUE 215 / DECEMBER 2021



Celebrating a Year in Design

identity.ae

A MOTIVATE PUBLICATION

DHS 25.00 QR 2.70 BD 2.60
SR 25.00 KD 2.10



6391100741137



AMG

MAKE YOUR STATEMENT.

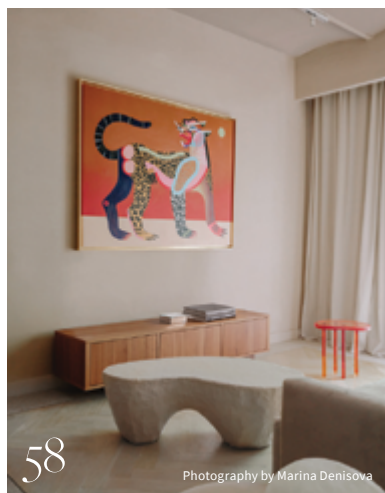
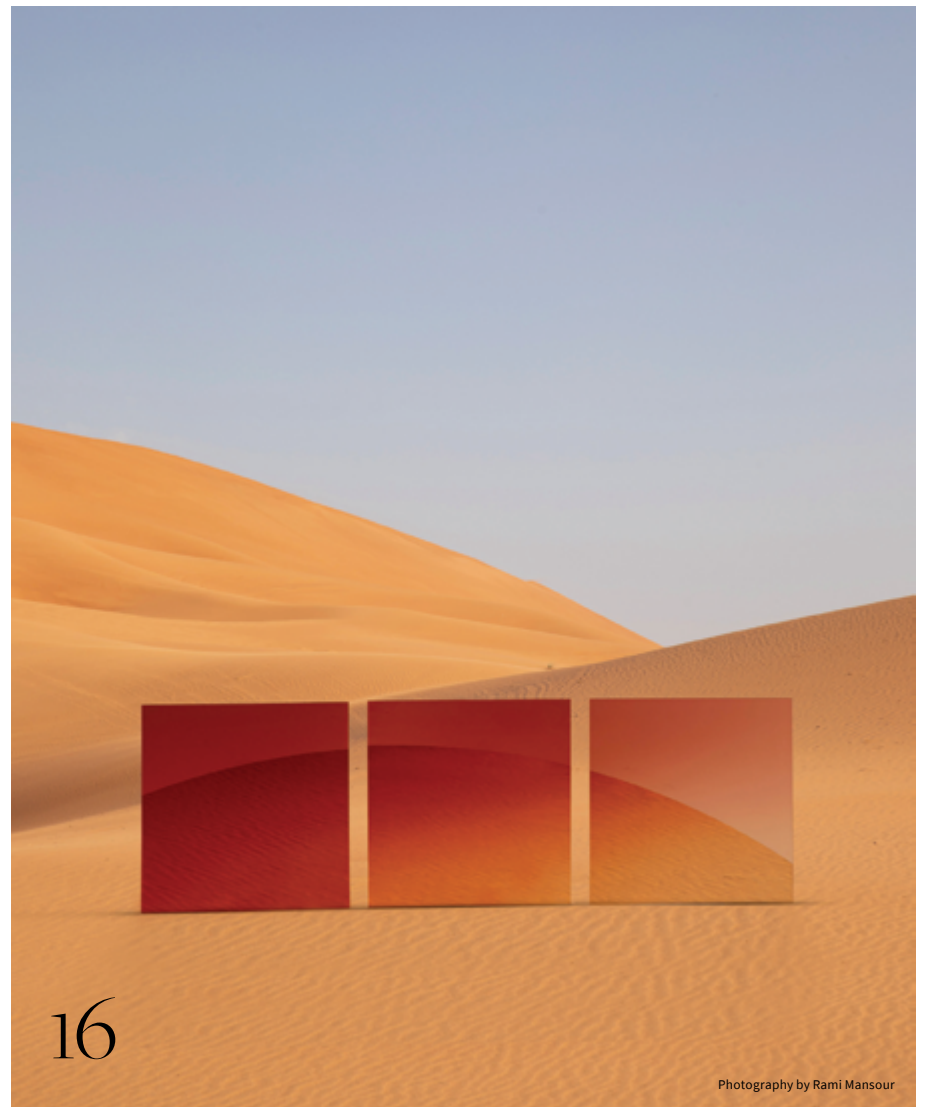
The Mercedes-AMG GT 4-Door Coupé.



Scan to learn more

Features

- 10** Creative crossroads
Athena Calderone and Beni Rugs have joined forces on a new rug collection
- 12** Pushing boundaries
Artist Maryam Turkey explores her multiculturalism through playful objects
- 27** identity Design Awards 2021
Announcing the winners of the identity Design Awards 2021
- 52** A serene escape
The Dubai Edition offers a calm retreat in the heart of the city's urban centre
- 58** A summer dream
Step inside the Barcelona home inspired by a contemporary Mediterranean style
- 64** A sensible approach
This small apartment in Paris marries functionality and aesthetics
- 72** Dubai Design Week
identity explores the highlights of the 2021 Dubai Design Week



Regulars

- 70** Design Focus
- 78** Products
- 80** Library
- 82** #idmostwanted



Casa Milano

UAE'S BIGGEST LUXURY SHOWROOM

NOW IN ABU DHABI



FEATURED BRANDS

hansgrohe

AXOR

roberto cavalli
HOME

VERSACE
CERAMICS

ITALGRANITI

Arredo3
CUCINE

Devon&Devon

MAISON VALENTINA
LUXURY BATHROOMS

CRISTAL & BRONZE

FRANKE

ter Hürne

Corà
DIVISIONE PARQUET

SANIT

PORCELANOSA

Plot 13, Showroom no. 5&8, M4, Mussafah, Abu Dhabi, UAE

Call or Whatsapp : +971 28867130, +971 56 216 2394

Follow us : [f](#) [@](#) [casamilanouae](#) [t](#) [@](#) [Casa Milano](#) | Website : www.casamilanoitaly.com

identity[®]

Editor-in-Chief

Obaid Humaid Al Tayer

Managing Partner and Group Editor

Ian Fairservice

Group Director

Andrew Wingrove

Editor

Aidan Imanova

Designer

Hannah Perez

Sub-editor

Max Tuttle

Chief Commercial Officer

Anthony Milne

Group Sales Manager

Manish Chopra

Sales Consultant

Micheline Leon

Sales Representative - Italy

Daniela Prestinoni

General Manager - Production

Sunil Kumar

Assistant Production Manager

Binu Purandaran

Production Supervisor

Venita Pinto

Contributors

Karine Monié

identity magazine is printed by Emirates
Printing Press.

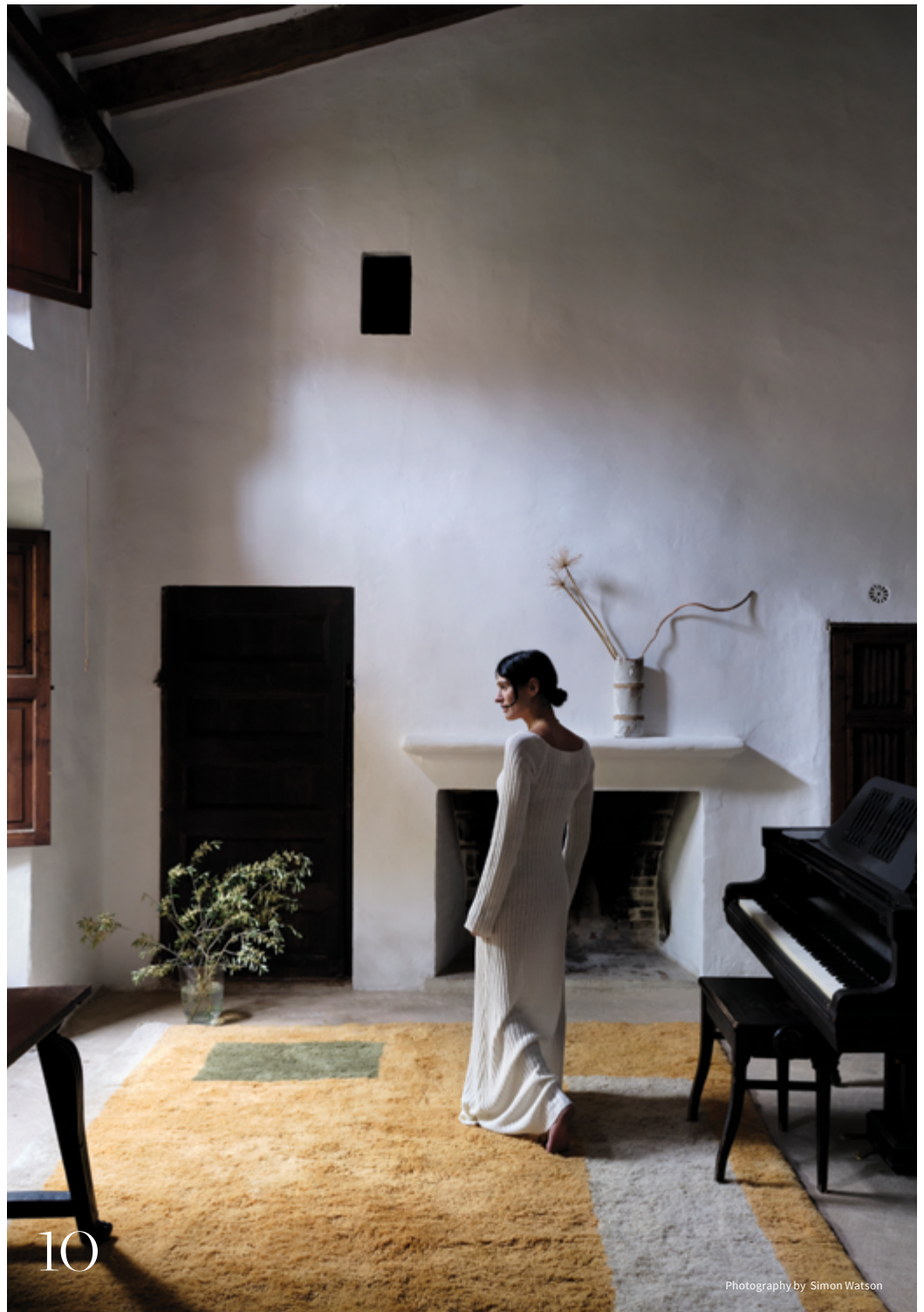
Member of:

Head Office: Media One Tower, PO Box
2331, Dubai, UAE; Tel: +971 4 427 3000,
Fax: +971 4 428 2260; E-mail: motivate@motivate.ae

Dubai Media City: SD 2-94, 2nd Floor,
Building 2, Dubai, UAE
Tel: +971 4 390 3550 Fax: +971 4 390 4845

Abu Dhabi: PO Box 43072, UAE, Tel:
+971 2 677 2005; Fax: +971 2 677 0124;
E-mail: motivate-adh@motivate.ae

London: Acre House, 11/15 William
Road, London NW1 3ER, UK; E-mail:
motivateuk@motivate.ae



FAEMINA

Design Your Private Coffee Bar

Coffee machine with a disruptive style, is the definition of the Faemina by Gruppo Cimbali. True icon in its form and substance, able to recreate any recipe with a simple touch, in true **home bar style**.

A taste that awakens your soul.

A luxury item that belongs in any interior design space. Irresistible elegance. A coffee machine for all the most exclusive settings. Must have for those individuals that desire to taste coffee in high class.



faema.com



FaeminaOfficial



faemina_official



Editor's Note

Another year has almost gone by and as much we all are still figuring out what to expect of the future in this uncertain time, there is also a lot to celebrate in terms of what the region has accomplished, even in a time of crisis.

Firstly, 2021 marks the UAE's Golden Jubilee – the 50th year of this visionary country which, in an astoundingly short period of time, has completely transformed itself into the vast urban metropolis we know of today. A transformation like that doesn't happen without vision and a belief in what can be accomplished in unity and as a collective. And in the process of creating something great, the leaders of the nation have always remembered their roots, their heritage and the strength of their culture.

With the seventh edition of the identity Design Awards now put to bed, I am very proud that so many projects from across the region, and the UAE specifically, highlight this cultural strength and respect for tradition while maintaining a future outlook on what tradition could look like in a renewed context. Our international jury – some of whom were less familiar with the design landscape of the region than others – all unanimously noted their admiration for how regional architects reference culture in their designs while demonstrating a strong understanding of material, craft and technology. It is these elements that are coming together to define the region's urban and design language. And while projects and practices in the region vary in style and approach (which is something we love to see!), the elevated quality of work means that designers in the Middle East are comfortably sitting amongst the best practitioners in the field worldwide.

I want to once again congratulate all our winners and highly commended prize-holders, and everyone on the shortlist for their amazing work.

I am looking forward to seeing what the new year will bring and wish everyone continued success and, most importantly, good health. See you all next year!



Photography by Natelee Cocks

On the cover:

The lobby at the newly opened The Dubai Edition



Photo by Young Habibti

Aidan Imanova
Editor



EMIRATES

WOMAN

Follow us on [instagram.com/emirateswoman](https://www.instagram.com/emirateswoman)

Creative crossroads

Designer, author and entertaining expert Athena Calderone and Morocco-based brand Beni Rugs have joined forces to create a hand-made collection that celebrates craft

WORDS BY KARINE MONIÉ



With more than 775,000 followers on Instagram, trendsetter Athena Calderone – at the helm of her lifestyle site EyeSwoon – has become a reference in the design world. Based in the United States, the author and celebrated expert travelled to Morocco for the first time in 2005, discovering an infinite array of textiles, textures and materials in the souks of Marrakech. This experience completely changed her approach. “It allowed me to see juxtaposition, symmetry and imperfection through a new lens,” she confesses.

Sixteen years later and still fascinated by those observations, Calderone has just launched her first collection for Beni Rugs, the Morocco-based makers of customisable rugs. Cofounded in 2018 by Robert Wright and Tiberio Lobo-Navia, the brand fulfils its mission by “weaving together the ancient techniques of Berber heritage with a modern design perspective [to] celebrate the magic of Moroccan rugs.” After starting as an online-only endeavour, Beni Rugs now has a brick-and-mortar studio space in Morocco and an apartment showroom in New York City.

The seeds of a partnership were planted when Calderone was searching for new items for her home and the Beni Rugs team created a flat weave for her. Sharing the same passion for pieces that reveal the hand of the maker, the connection between Calderone and the Beni Rugs team was immediate.

Named *Broken Symmetry*, the new line is hand-made by local artisan women in Morocco and comprises 12 geometric designs in custom-dyed, sun-faded tones of sienna, sage, fawn, bone and desert rose. “I love to create symmetry and then break it,” Calderone says. “I love repetition, order; but I also love to resist the obvious. Somehow there is common ground and a sense of balance in those very imperfections.

How I designed this collection follows the same vernacular.”

The patterns and shapes reflect several sources of inspiration – from Mexican architect Luis Barragán to American abstract painter Agnes Martin and New York-based artist Ethan Cook.

“Athena’s aesthetic reflects so much of what our brand is all about – the importance of texture, natural and authentic materials, a passion for great design and global influences,” says Robert Wright, co-founder of Beni Rugs.

Through different shapes and tones, every rug in the collection – available in standard size, runner and custom request – was envisioned to give rise to an emotion where the patina, beauty of imperfections and craft play essential parts.



Photography by Adrian Gaut

“I create a hybrid universe, a place all my own, constructed from the many different architectural elements I’ve seen or experienced in places I’ve come upon in my life,” says Maryam Turkey, who is based in Brooklyn, New York. “As an Iraqi-American who has lived in both Baghdad and New York, I recognise the dichotomy and connection between the vacancies of buildings following the Baghdad war versus the vacancies of the high-rise commercial buildings in New York City during the pandemic. Both have their own, individual effects. Yet both echo a moving, potent sense of emptiness, an absence, a sudden loss of human energy.”

Born in 1994 in Baghdad and raised by two artists – her mother is a ceramicist and her father is a photographer and filmmaker – Turkey and her family fled to Syria in 2006 during the civil war before moving to the United States as refugees. “Since I was two years old, I have been drawing and although the medium and skill changed



Photo courtesy of Maryam Turkey

Pushing boundaries

Iraqi-American artist and designer Maryam Turkey explores new ideas and materials through playful objects that reflect her multiculturalism

WORDS BY KARINE MONIÉ

throughout the years, I realised that my take on each art phase was similar in the sense that it came out naturally, even when I tried to repress it during some phases in my life,” she confesses.

Turkey studied visual arts in high school and then earned her bachelor’s in industrial design at Pratt Institute. “My career in design took off since my graduation in 2017,” she remembers. “I won an award through WantedDesign to attend an art design workshop in France called Domaine de Boisbuchet. My mentor there was Sabine Marcelis and, through her, I learned the process of functional art-making and sculpture that explores production methods and materials.”

In addition to this rich experience, Turkey has also been influenced by other contemporary creative minds such as: “Maarten Baas and Nacho Carbonell for their use of clay and how they evoke feeling and liveliness with the hand-sculpted material ... Hayv Kahraman for the harmony of elements and her compositions ... Donald Judd for his studies of negative space and colours in his three-dimensional work ... Do Ho Suh with his representation of ‘home’ ... [and] Noguchi for his asymmetrical stonework and for mastering the form and space relationship.” ►►



Photography by Matt Harrington



Maryam Turkey


Photo courtesy of Carpenters Workshop Gallery

Expressing herself across media, Turkey mostly creates objects by hand that go from functionalism to expressionism through an approach that is both research-driven and intuitive. “My favourite part of the process is happy accidents, where I learn something that the nature of material is telling me to explore further,” she says.

One of her most recent series, ‘Between Rise and Fall’ – which is part of a group show called ‘The New Guard: Stories from the New World’ at the Carpenters Workshop Gallery in Midtown, New York, on view until January 2022 – was born out of Turkey’s fascination with the sun streaming through her studio windows. Playing with light

and mirror, these pieces “evoke the perception of the inevitable human cycle of building, destruction and rebuilding that we do for power,” she describes.

Unlike this black-and-white series, Turkey usually works with pastel colours, thanks to a clay material which mixes paper pulp and plaster. “I am driven by my curiosity to explore and push boundaries,” she says. “Each piece I work on opens doors for potential ideas.”

Currently working with a collector on a commission that she will be able to announce as soon as the project is executed, Turkey continues day after day to delve into new mediums. 

Coffee break

The new *Faemina* machine is taking the art and science of making coffee seriously, while mixing in beautiful design



Coffee is much more than a trend. In recent years, it has become an entire culture that fascinates both professionals and amateurs alike. All over the world, people are looking for the best tastes, places and ways to savour or prepare the beverage. It has become a phenomenon so elevated that many would consider it an artform. The increasing demand and interest convinced Italian brand Gruppo Cimbali – a leader in the design and production of professional espresso machines – to launch *Faemina*, which combines aesthetics and innovation. This machine allows aficionados to enjoy high-quality coffee in the comfort of their own homes or in any professional setting, such as bistros, boutiques and concept stores.

Shaped by ItalDesign, the *Faemina* machine features elegant and minimal lines. It comes in two styles: The first, 'Urban Color', is made of anodised aluminium with a contrasting body of glossy finishes, from black to white to all the Pantone colours of 2021; the second, 'Classy', features

fine materials such as lucid aluminium with satin copper or a glossy black.

As important as aesthetics are, they aren't the only thing that matters with *Faemina*. Performance and durability also characterise this new piece of equipment, which is both functional and decorative. Integrated inside the reservoir, the water softener filter helps to provide the best quality possible, assuring adequate maintenance of the machine for the long term. Several elements make *Faemina* easy to use and clean, such as the option of a removable drainage tank. And there is more: The patented 'Up&Down' system is particularly convenient and allows for the use of different cup sizes depending on the type of coffee, whether it is an espresso, an Americano or a cappuccino – to name only a few. Additionally, the *Autosteam* wand is the perfect element to foam milk automatically. For a complete experience, the Be Faema app, which includes a voice recognition feature, invites coffee experts and coffee lovers to constantly discover all the new functionalities of their machine. Ready for an espresso?



Objects of desire

Gallery Collectional
opens its doors in Dubai
as the city's first ever
collectible design space

WORDS BY AIDAN IMANOVA







Photography by Rami Mansour



The city that has immortalised the works of some of the world's most prominent architects and designers is now home to its first permanent collectible design gallery, Gallery Collectional. Housed inside the Eden House complex designed by Emirati architect Khaled Al Najjar, the minimal space boasts a selection of curated objects and furniture pieces by some of the most sought-after talents in design, exploring the discourse between beauty and functionality.

From Pietro Franceschini's silver and brass arched consoles to Michael Anastassiades' *Mobile* chandeliers, many of the pieces in the gallery are not unlike functional sculptures. Other prominent pieces in the gallery's first showcase include the *Club* chaise lounge by Dimorestudio, the *Single Slinkie* rug by Patricia Urquiola for CC-Tapis and the *Eko* sofa by Christophe Delcourt, among many others.

"For our first exhibition, 'The Shape of Things to Come', we wanted to curate a selection of



Photography by Paolo Regis

pieces that encompasses the best of collectible design currently on the market,” says the gallery’s creative director, Catalina Ruiz Urquiola, who curated the show.

“The selection of designs in the inaugural exhibition has been collected from across the globe to showcase a variety of inspirations and material sensibilities. Every designer chosen for the exhibition has something special that they bring to the gallery, whether it’s the bold shapes of Christophe de la Fontaine’s *Serpentine* sofa, or Agglomerati’s ingenious way of translating wood joints into stone.”

Urquiola explains that the gallery is also a natural next step in the evolution of H&H, under whose umbrella the gallery sits, adding that the space is there to be visited by anybody interested in contemporary collectible design.

“Dubai’s design and art scenes have been growing over the last five years and the approach to both has been maturing across the region. The

growing number of art collectors in Dubai and their [diverse] tastes gave us the confidence to introduce something new to the market and to allow art collectors, as well as people who would define themselves as aesthetes, to not only get access to some of the most exciting new collectible design pieces, but to also be able to collect design pieces which have been commissioned with the region in mind,” she says.

“Our long-term aim, as well, is to work with local and [Middle East-based] designers and to launch them beyond the region, providing international exposure [while] championing regional collectible design in capitals across the world.”

For the launch of the gallery, Collectional commissioned Dutch designer Sabine Marcelis to create an exclusive collection inspired by the city of Dubai. The result is a series called *Mirage*, which comprises two mirrors and a table that were created to represent the essence of Dubai through glass and light, using the warm colours

of the sun in the desert, juxtaposed with the city during the day and night.

“This collection being the first I would show in Dubai, I wanted to create a strong link to the city and base the whole collection on what makes [it] so unique: the duality of the soft lines of the desert and warm glow of the desert sun, contrasted against the city’s sharp architecture and myriad of lights that appear in the evening. Similarly, the objects themselves have this same duality,” Marcelis explains.

The wall pieces feature a new combination of both reflective and sandblasted glass that together create a soft diffusion when interacting with light, and a strong colour reflection when the sun hits its reflective surface. The collection uses a special colour treatment, with the same tones used for the table. “The pieces are all about the interaction of light, both natural and artificial, and have an evolving presence as the day progresses into night,” Marcelis says. ■

A new nature

Lebanese designer
Khaled El Mays
reveals his latest
collection, 'New
Nature', produced
by craftspeople
in Mexico City in
collaboration with
House of Today

WORDS BY AIDAN IMANOVA
PHOTOGRAPHY BY HECTOR MENDOZA



A vibrant new series by Khaled El Mays, made with craftspeople in Mexico City, was launched at Design Miami/Curio 2021 and presented by the Lebanese designer's long-time collaborator, House of Today – a non-profit organisation based in Beirut which focuses on nurturing local talent into international markets.

'New Nature' offers organic shapes and movement as well as a juxtaposition of colour and form. The surrealist collection captures the essence of blurred lines, where volumes shift, interact and weave together before taking solid shape. The five-piece series consists of two mirrors, a cabinet, a coffee table and the designer's first ever chair, forming an ensemble that is rooted in the specific craft produced in Mexico's capital.

Interplays of materials such as leather, wood and ceramics (a first for El Mays) give the collection its distinct appearance – which displays hints of the Art Nouveau movement that has inspired the collection.

"I have slowly been approaching the Art Nouveau period in design history, attempting to extract subtle lines to make them my own," El Mays explains. 'New Nature' is a result of four years of research, where the designer searched for a new angle and interpretation of this period in history, infusing contemporary nods and playfulness that is consistent in his thread of work.



"The exploration is ongoing and, most importantly, now intertwined with Mexico City, where I was introduced to a new language of colour and craft, without which this series would not have come into being," he adds.

The collaboration with Mexican artisans is part of a mentorship programme that began in 2016, when House of Today's founder, Cherine Magrabi Tayeb, suggested that the designer explored artisanal ceramic workshops while visiting Mexico City. El Mays had until then only worked with craftspeople from Italy and his native Lebanon. The novel use of ceramics in this collection brings forth an added layer that strengthens its surrealist spirit and Art Nouveau-inspired lines.

"Lebanon is known for design, and our designers are our cultural ambassadors to the world, painting a positive face to what our country has to offer," Tayeb adds. "It is imperative that we continue to encourage creative growth and expression and empower design culture as a contributing force for change."

The solo exhibition is the second Design/Miami collaboration between House of Today and El Mays, who earlier this year exhibited a chair for Dior and a solo collection for Nilufar Gallery during Milan Design Week.

'New Nature' is on show between 1 and 5 December 2021.

Keeping it local

Yousef and Elias Anastas have opened the first Local Industries store in Amman, where their entire collection is available for purchase

WORDS BY AIDAN IMANOVA



Since 2011, Palestinian architecture duo Yousef and Elias Anastas – founders of AAU Anastas, based in Bethlehem – have been working with artisans in Palestine on their furniture arm, Local Industries, which mostly comprises seating such as stools, benches and chairs. Local Industries focuses on a collaborative approach, and the conception and production of each piece forms a continuous dialogue between the architects and the local artisans. In addition to breaking the cycle of having to source low-quality furniture at cheaper prices, Local Industries offers highly functional furniture to an international clientele, complete with local know-how.

“This endeavour aims to reassert the value of local Palestinian labour without freezing it into a traditional and obsolete role or mindlessly imposing alien standards to its method of work,” the brothers explain.

While production continues to stem from the architects’ base in Bethlehem,

Local Industries has opened its first store in Jordan’s capital, Amman. The store is located in a warehouse space in Sweifieh Village, with the design honouring its original function: the construction features rough finishings, and chairs are displayed on a wall of shelves or arranged within the space as free-standing objects. The new Amman store is selling Local Industries’ entire collection as well as pieces from its new series, such as ones from the *Crocodile Collection*.

“Local Industries is taking a new direction with the opening of stores as a reaction to increased shipping costs post-pandemic,” Yousef explains.

The Amman store is setting a precedent for more stores to follow in 2022, as well as partnerships with various retailers such as Studio 7 in Doha and BEYYN in London. Its upcoming collection will be revealed in spring, designed in collaboration with a number of designers selected by the Anastas brothers.







A force of nature

Lasvit has long been at the helm of crafting wondrous lighting installations that have illuminated some of the world's most iconic landmarks. Now, with its new scalable *Icons* series, its unique chandeliers have the chance to enlighten our homes



Dancing Leaves

Spanning a full ten metres across the ceiling of Dubai's W Hotel is an installation composed of 6.5 tonnes of hanging glass and metal that plays with light and colour to visually pronounce the consonant 'W'. Titled 'The Soundwave', it is one out of a thousand dynamic creations by the Czech masters of Bohemian glass and bespoke lighting that continue to 'wow' spectators worldwide.

Whether adorning some of the globe's most coveted hotel lobbies or cascading from triple-height ceilings in cultural venues such as the Dubai Opera, Lasvit's chandeliers and lighting installations have, no doubt, left a sparkle. And with its newly launched *Icons* collection, homeowners are now able to own a piece of that sparkle as well.

Comprising some of the brand's best designs created over a period of 15 years, the *Icons* series offers scaleable versions from its existing

collections in ready-to-order standardisations, to suit a myriad of homes of various styles and tastes. The curated selection of bespoke designs carries the company's distinct DNA of light and glass through a set template of shapes and spectrums, while simultaneously involving one in the creation process by offering a range of colour options to sit in perfect harmony with one's living space.

Herbarium is one of Lasvit's most recent designs that forms part of the *Icons* collection – melding traditional Bohemian craft with a special aesthetic that celebrates nature. Each piece of clear glass is unique and crafted by hand, allowing glimpses of golden sunlight to bring magic into the space. It is available in nine ready-to-order variations in oval and round shapes, and various sizes. *Herbarium* also comes in two special living room 'bouquets', as well as a version tailored specifically for staircases.

Also celebrating nature is another collection in the series called *Dancing Leaves*, which was originally designed for the lobby of Paris' famous Peninsula hotel and is now ready to make a statement in your home. Just as its name suggests, the chandelier appears as a cluster of hand-sculpted glass leaves, suspended in mid-air. The collection also comes in a variety of arrangements and shapes.

"Glass enables us to balance between the movements of nature and state-of-the-art design," says Lukáš Černý, general manager for Middle East and Africa & South East Asia at Lasvit. "With *Dancing Leaves*, you can watch the eternal spin of flawless wind, right in the comfort of your home."

Whether choosing to opt for a glass garden that blooms in the middle of your living room, or to have leaves dancing in the wind above the dining table, the *Icons* collection is sure to transform any living space into an elegant sanctuary.



Eclisse
Vico Magistretti



identity

DESIGN
AWARDS
2021

**ANNOUNCING
THE WINNERS**

The winners of the 2021 identity Design Awards were announced on 17 November at the Address Beach Resort in Dubai, honouring projects in the Middle East across 18 categories against a backdrop of the city's spectacular landmarks such as the recently opened Ain Dubai.

The winners were selected by an influential panel of international judges spanning both architectural and interior design disciplines, including New York City-based interior designer Ahmad AbouZanat, Italian design legend Giulio Cappellini, Paris-based Lebanese architect Lina Ghotmeh, London-based British-Nigerian designer Mimi Shodeinde, and Italian design duo Studiopepe.

This year saw the introduction of the Highly Commended prize, awarded to projects that have received special attention from the jury, as well as the addition of a new Fit Out category.

As with every year, the identity Design Awards continues to shine a spotlight on some of the most impactful, innovative and environmentally conscious projects across the Middle East, from residences and hotels to cultural projects and spaces created for the public. This year's shortlist displayed the growing strength of the region's built environment, with over 200 projects spanning the UAE, Oman, Kuwait, Jordan and Lebanon.

The range of projects seen across the shortlist and the winning entries further affirms that the Middle East is developing a strong sense of architectural identity by staying true to context and paying homage to tradition, responding to environmental challenges and pushing the boundaries with material exploration and craft, to create environments that are both authentic and liveable.

FROM THE



Ahmad AbouZanat, *Project AZ*

“It is very inspiring to see sustainability at the forefront of most entries. This commitment to build a better future is seen across the region and it’s an indication that our future generations will have a better quality of life.”



Mimi Shodeinde, *Miminat Designs*

“It was a pleasure to go through all the different projects in all the different categories. The main thing that stood out to me was definitely the reference to culture and the well thought-through material combinations and palettes merged with technology.”

JURY



Lina Ghotmeh, *Lina Ghotmeh Architecture*

“I felt particularly engaged with projects that showed material sensitivity but also an environmental one. I think building in the UAE and in the wider Middle East brings one even closer to nature and to the climate itself, and encourages us to think about architecture that is rooted in its environment, that is materially sensitive to its context, and echoes the landscape around. We look for rooted designs that talk about the culture of the place without falling into the cliché, and I do feel like there is a lot of effort in looking at designs that shy away from [the] glass buildings that we have been seeing in the last decades.”



Giulio Cappellini

“I was really impressed by the projects that I saw – both in architecture and interior design – which were all very international and contemporary but with great respect for the local culture. I think today, in contemporary design and architecture, this is very important.”



Studiopepe

“We were very surprised to find a huge variety of concepts and styles – and, in many cases, great attention being paid to tradition and local materials. We saw many different and original approaches and a multitude of voices which together create a fresh and innovative vision for the architectural and design landscape in the Middle East.”

ARCHITECTURE COMMERCIAL

SHORTLISTED

One Deira Enrichment Project by AE7

HIGHLY COMMENDED

One Deira Enrichment Project by AE7



WINNER

Al Wasl Experience Centre by U+A

Al Wasl Experience Centre is Wasl Properties' flagship corporate hub, commissioned to Dubai-based U+A to raise the company's profile. The building itself was inspired by the fast-paced growth of Dubai, and features a dynamic façade which is a direct reflection of the city's everchanging and evolutionary urban landscape. U+A worked with local materials to ensure that the building is truly rooted in its place while also remaining materially sensitive and sustainable.



ARCHITECTURE CULTURAL

SHORTLISTED

Cultural Foundation by CEBRA Architects
Khor Kalba Turtle & Wildlife Sanctuary by
 Hopkins Architects

The Opportunity Pavilion by AGi Architects
Museum of the Future by Museum of the
 Future and Killa Design
Expo Live Pavilion by Archidentity

HIGHLY COMMENDED

Khor Kalba Turtle & Wildlife Sanctuary by
 Hopkins Architects

WINNER

Gargash Mosque by Dabbagh Architects

The Mosque of the Late Mohammed Andulkhaliq Gargash, located in Dubai's industrial zone of Al Quoz, was built in honour of the late patriarch of the Gargash family, and also as a gift to the community. Dabbagh Architects created a contemporary structure that simplifies traditional mosque typology into basic forms, complete with a courtyard space incorporating a sculptural canopy. Designed to transition the worshipper from the

material world into an inner spiritual experience, the building's skin is perforated and recessed with triangulated patterns which also seep into the interior, referencing traditional Islamic geometry, albeit reinterpreted using a deconstructed, contemporary language. The building utilises passive design such as natural lighting and water-saving devices and demonstrates a commitment to sourcing regional and local materials.

SHORTLISTED

Palm Tower by RSP Architects

SLS Dubai Hotel & Residences by Aedas

The Address Beach Resort by Killa Design

HIGHLY COMMENDED

Al Badayer Retreat by Wael Al Masri Architects

ARCHITECTURE HOTEL



WINNER

Alila Hinu Bay by Ibrahim Jaidah Architects and Engineers

Alila Hinu Bay is a five-star beach resort that stretches over 45 hectares of an ecological site located in Mirbat, in the Governate of Dhofar in Oman, and comprises 112 luxury retreat units and villas among other recreational facilities. The design involves minimal intervention onto the site, in order to conserve the surrounding natural

environment, which drives its design concept and inspiration. The minimalist hotel is heavily influenced by Omani vernacular, such as Falaj water features, arched corridors and local artworks, and utilises local materials such as Omani marble on the façade and indigenous native and adaptive plants and landscaping.

SHORTLISTED

ENOC Future Mobility Station by Aedas
The Opportunity Pavilion by AGi Architects
Mohammed Bin Rashid Library by Dubai
Municipality and Architectural Consulting Group
The Bowl by Fortytwelve

ARCHITECTURE PUBLIC SPACE

HIGHLY COMMENDED

Gargash Mosque by Dabbagh Architects



WINNER / DESIGN OF THE YEAR

House of Wisdom by Shurooq and Foster + Partners

With a brief to create a library of the future, Sharjah's House of Wisdom – designed by Foster + Partners and commissioned by Shurooq – is a two-storey building that embodies a sense of lightness, featuring a large floating roof that cantilevers on all sides of its transparent rectilinear volume, referencing the Barasti architecture of the region. The building was designed to be open and inviting within a simple square plan,

laid out as four distinct quadrants around a densely planted and shaded open central courtyard. The architecture employs passive design principles and interactivity, such as moveable bamboo screens that control the level of light entering the interior spaces. Acting both as a library and a cultural centre, the House of Wisdom promotes learning and a 'cross-fertilisation of ideas'.

ARCHITECTURE RESIDENTIAL

WINNER

Jade by Studio Toggle

Jade – designed by young Kuwait- and Portugal-based architecture practice Studio Toggle – is a mid-rise multi-unit residential building enveloped by a composite skin of light concrete, perforated aluminium and high-performance glass panels. The design of the building aims to facilitate an urban and sustainable way of living for young families in Kuwait. The living units are organised around the access core of the building, with interior gardens connecting different living spaces, while the social spaces face the main avenue and the sea. The building

itself forms a geometrically minimalistic composition, with architectural elements inspired by traditional courtyards of the Middle East. Overall, the design explores a new typology for living without compromising the vernacular's original qualities, such as combating extreme weather by adapting and scaling up the traditional courtyard concept, along with mashrabiya screens for privacy. The courtyards allow for cross-ventilation and diffused natural lighting without being exposed to the extreme desert sun.

SHORTLIST

Al Fattan by AE7

Casa Play by FAR Architects

Private Villa by XBD Architecture

Sail Tower by MZ Architects

Wafra Living by AGi Architects

HIGHLY COMMENDED

Amer and Lamya's Villa by Binchy & Binchy Architects





INTERIOR DESIGN FIT OUT

SHORTLIST

Boxica by Horton Interiors

Raclette Brasserie & Café by DesignSmith

Royal Boutique VIP Showroom by OPI

Sharjah Research Technology &

Innovation Park (SRTI Park) by Design
Infinity

HIGHLY COMMENDED

**Abu Dhabi Early Childhood Authority
(ECA)** by Summertown Interiors

WINNER

The Coffee Lab by Pinnacle Interiors

Designed by Sharkitects, with fit-out works completed by Pinnacle Interiors, The Coffee Lab was conceptualised as a sophisticated laboratory for speciality coffee, offering ample research and production into a variety of worldwide coffee flavours and carefully selected individual coffee beans. The concept behind the fit-out was to honour this extensive level of research by executing a space that is reflective of it by focusing on the details of the design. The 'laboratory' itself is set between indoor and outdoor spaces, located on the waterfront of Dubai's Port Rashid. Pinnacle Interiors focused on elements such as technically-sound floor screed solutions, while the large coffee bar counter positioned at the centre of the café – enclosed within a metal frame that runs from the ground to the roof level – acts as the hero of the project.

INTERIOR DESIGN HEALTH AND WELLNESS

WINNER

Sensasia Stories by Roar

The theatrical yet restrained design for Sensasia Stories spa in Dubai's Kempinski Hotel Mall of the Emirates sets it right at the heart of the city's thriving wellness scene, and was completed by UAE-based interior design studio Roar. The design takes its cues from the Sensasia brand's pan-Asian roots, through an exploration of the region's architectural typologies, with the arch used as its predominant feature, eventually inspiring the many areas of the spa. These arches dominate the space through both dramatic

and subtle interventions, from the illuminating arches set above the male and female lobbies to decorative elements formed around the shelving in the reception area. The earthy colour palette of the spa is complemented by a similarly restrained material selection. With interior spaces increasingly focusing on the user experience, Roar was able to fine-tune the balance between wow-ing and soothing by manoeuvring visitors through features that spark curiosity while calming the senses.

SHORTLIST

Barakah Studio by Black Dot Interiors

Ciel Spa by Bishop Design

Izil by Brand Creative

The Spa by KCA International

HIGHLY COMMENDED

Barakah Studio by Black Dot Interiors



SHORTLIST

Accor Hotel by Roar

Al Badayer Retreat by Wael Al Masri Architects

Rove at Expo 2020 by RSP

SLS Dubai Hotel & Residences by Bishop Design

INTERIOR DESIGN HOTEL

HIGHLY COMMENDED

VIDA Umm Al Quawain by H2R Design



WINNER

The Address Beach Resort by KCA International

The Address Beach Resort by KCA International is exemplary of beachfront luxury, complete with a plush light décor and a mixture of textures and colours such as rough limestone, warm wood and dark metal finishes for a contrasted dramatic effect. The design approach is timeless; sophistication and simplicity reign, with neutral colours informing the overall palette, inspired by the surrounding nature of sea, sand and sky,

with sandy tones and splashes of marine blues, teal and green. The hotel lobby features 16-metre-high ceilings, introducing a grandeur that is toned down by the relaxed living environment created at the centre of the space. The oval shape of the building influenced a new way of thinking when it came to the guest rooms and suites complete with large rectangular spaces, with views facing the sea and the dynamic city skyline.

INTERIOR DESIGN NIGHTLIFE

WINNER

Privilege by Bishop Design

The high-energy Privilege club, designed by Bishop Design for SLS Hotel in Dubai, is a quirky space that features dramatic elements and positions the venue as a playground for parties in the city. The main club area is adorned with mirrors of different sizes and shapes created to provide intriguing reflections of the dance floor, while the chairs are wrapped in gold, exaggerating the glamorous

appeal of the space. A key element is the main ceiling lighting feature that comprises a flowing linear form layered on top of the other, which changes colour in accordance with the music's RPM, creating an immersive experience – designed exclusively for SLS. The bar is a seductive combination of black marble and rose gold that wraps the main bar cladding in corrugated metal forms.

SHORTLIST

BO18 by Rabih Geha Architects

Deseo by Bishop Design

HIGHLY COMMENDED

Li' Brasil by KCA



INTERIOR DESIGN OFFICE

WINNER

Fortytwelve HQ by Fortytwelve

Kuwait-based multidisciplinary studio Fortytwelve designed its headquarters and office space to reflect the company's aesthetic and approach, creating a clean and minimal space with a calm environment and an open workspace. The design incorporates muted tones, creating a sense of versatility that is further enhanced by sliding panels separating the office into two where the main office space can be divided from the meeting area and adjoining

workstations. This offers a sense of duality, with options to have an open plan working environment or one that is more private, depending on one's needs. The interiors seamlessly integrate materials including micro-cement, travertine, walnut wood and stainless steel, inspired by the natural and muted colours of the desert sand, that are juxtaposed with smooth and rough textures of the old and new.

SHORTLIST

BW Interiors office by LS Design

C'est Ici Atelier by C'est Ici

Early Childhood Authority by Roar

Jade Stone by Nakkash Design Studio

Miral HQ by Godwin Austen Johnson

PWC Middle East HQ by Say Studio

Studio Meshary AlNassar office by Studio

Meshary AlNassar

Visa CEMEA HQ by Gensler

HIGHLY COMMENDED

TF Holding Offices by Studio M



INTERIOR DESIGN PUBLIC SPACE

WINNER

House of Wisdom by Shurooq and
Foster + Partners

The House of Wisdom's interior design was created in conversation with its architecture. The building was designed to be open and inviting, with a simple square plan that is implemented through its interiors and complemented by grander gestures such as the double-height reception and an expansive ground floor containing large spaces for exhibitions, as well as a café and a children's educational space. The upper floor hosts a series of pod spaces suspended above

the central courtyard, which offer quiet and collaborative environments, exhibition areas and reading lounges. Throughout the building, there is an emphasis on establishing and retaining a connection with the outside, with views looking onto the gardens surrounding the building. The main book library and research part of the building is set over two floors towards the south of the building, with its façade open onto the landscaped garden.

SHORTLIST

Abu Dhabi Children's Library
by CEBRA

Inside Burj Al Arab by KCA
International

Local by Shell + Core

**Renovation of the Cairo Arab
League Main Hall** by Nada Debs
Studio

**Sharjah Research Technology
and Innovation Park** by Roar

HIGHLY COMMENDED

Closet Case by LS Design



INTERIOR DESIGN RESIDENTIAL

WINNER

One Palm Penthouse by Studio M

Set on the waterfront of Dubai's Palm Jumeirah and designed by New York-based architects SOMA, One Palm by Omniyat has become one of the city's most highly anticipated residential developments. Studio M's design for the penthouse creates a warm reinterpretation of modernism that resonates with a discerning and cosmopolitan clientele, envisioning a sanctuary that exudes effortless luxury, relaxation, entertainment and wellness. Taking cues from contemporary

tropical Brazilian architecture, the residence interweaves indoor and outdoor spaces, complete with terraced pools and lush foliage. The floor-to-ceiling sliding glass windows retract to merge the interiors with the outdoor spaces, opening up to massive terraces and entertainment areas. The four-bedroom property features a light neutral colour palette combined with a selection of natural materials that further ties the interior spaces with the architecture of the building.

SHORTLIST

Bukhash Residence by Roar

Private penthouse by Kart Group

Residence A by Idea Art Interior Architects

Samad Studio by Nexus Design Studio

T Apartment by Thomas Trad

Yorkvilla by C'est ici

HIGHLY COMMENDED

Deir Yousef by Greenwood Barton Architects



INTERIOR DESIGN RESTAURANT

WINNER / DESIGN OF THE YEAR

Orijins by VSHD

Designed as a surrealist take on a traditional coffee shop, VSHD's Orijins is a sparsely decorated space of muted plaster and cement. The design doesn't shy away from negative space, which almost becomes as decorative as the defining design elements that dot the café. The envelope features curved volumes in the ceiling that ground the space, establishing a sense of natural order where organic shapes take precedence and the relationships between

objects become similar to those found in nature, which is the primary inspiration for the design. Orijins is a rich amalgamation of contradictions: massive blocks of stone, slender lightweight metal furnishings and curvaceous elements are all set against a textured and muted backdrop. By combining a mismatched design vocabulary of sculptural, minimal, monolithic and delicate gestures, VSHD has created a novel café experience.



SHORTLIST

Carna Steakhouse by Bishop Design

Caya by Studio EM

Drop café by Roar

Esproses Café and Floral Boutique by MULA

PDL Coffee by Nakkash Design Studio

The Arts Club Dubai by Allen Architecture
Interiors Design

The Grey by XO Atelier

HIGHLY COMMENDED

Terra by Bone

OUTDOOR DESIGN

SHORTLIST

The Opportunity Pavilion by AGi Architects

Zeta 77 by KCA International

HIGHLY COMMENDED

Deseo by Bishop Design



WINNER

HH Pavilion by Orange Design Studio

The HH Pavilion by Orange Design Studio is set within a multi-family compound that captures a sense of calm and openness and is designed to be used all year round. Created as a space for indoor and outdoor living, the pavilion is designed to bring nature inside, blending with the surrounding environment while maintaining a minimal form. The structure's glazing is the hero

of the project: disappearing when open and barely visible when closed, further emphasising the interaction between indoor and outdoor spaces. The pavilion itself is designed in contrast with the organic shapes of the surrounding nature, resulting in a floating rectilinear form. Located amongst lush flora and fauna, the site additionally boasts tall trees for privacy and shade.

PROJECT OF THE FUTURE

SHORTLIST

Al Mamsha Community by SOSA

Early Years Library by Lulie Fisher Design Studio

Jubail Island by DLR

Spa Social by H2R

W Hotel Extension Tower by Aedas

Zeera by Buddha Bar by LW Design

HIGHLY COMMENDED

Mamzar Lagoon Beach by Dubai Municipality and
Parsons Overseas Limited

WINNER

CMPLX by Bone

CMPLX is a conjuration of seven carefully curated warehouses dedicated to nurturing and developing local and international creative talent and concepts in the UAE. The project spans over 3000 m² and is situated on a corner plot within Dubai's Al Quoz neighbourhood, forming part of the arts and culture district. The complex

features a blind façade and a staggered arrangement, shaped specifically to gain more landscaping area. The cantilevered mezzanine floor area extends outwards to form intimate green corridors, with nature invited into the central heart of the project and into the in-between spaces to create dedicated areas for pedestrians.





PEOPLE'S CHOICE AWARD

WINNER

Casa Play by FAR Architects

Casa Play is a recreational hideaway located in Damour, along the southern coast of Lebanon. The site is on agricultural land bound by fruit trees and banana plantations, as well as the main seaside highway on the east, and overlooks the Mediterranean Sea on the west. The house's curved steel structure is inspired by the simple and functional greenhouse typology found in nearby plots. A red box housing an open kitchen and bathrooms has been inserted within the steel trusses, while the rest of the space is divided into two main areas reserved for activities. Steel trusses also extend outside and create a partially covered terrace, shaded with greenery, leading to the outdoor pool. Climbing bougainvillea are planted in circular openings in the concrete platform, under a steel pergola which elongates the façade.

THE WINNERS



The team from Bishop Design



The team from U+A



Orange Design Studio



Dara Towhidi of Foster + Partners
with the team from Shurooq



Ibrahim Juma from Dubai Municipality



The team from Summertown Interiors



Bone



FAR Architects



Binchy & Binchy



Pinnacle Interiors



The team from KCA International



The team from VSHD



The team from Roar



H2R



Black Dot Interiors



Dabbagh Architects



LS Design





IDENTITY DESIGN AWARDS 2021 WINNERS

Architecture – Commercial

Al Wasl Experience Centre
U+A

Interior Design – Fit Out

The Coffee Lab
Pinnacle Interiors

Interior Design – Residential

One Palm Penthouse
Studio M

Architecture – Cultural Building

Gargash Mosque
Dabbagh Architects

Interior Design – Health & Wellness

Sensasia Stories
Roar

Interior Design – Restaurant

Orijins
VSHD

Architecture – Hotel

Alila Hinu Bay
Ibrahim Jaidah Architects and Engineers

Interior Design – Hotel

The Address Beach Resort
KCA International

Design of the Year – Interior Design

Orijins
VSHD

Architecture – Public Building

House of Wisdom
Shurooq and Foster + Partners

Interior Design – Nightlife

Privilege
Bishop Design

Outdoor Design

HH Pavilion
Orange Design Studio

Architecture – Residential

Jade
Studio Toggle

Interior Design – Office

Fortytwelve HQ
Fortytwelve

Project of the Future

CMPLX
Bone

Design of the Year – Architecture

House of Wisdom
Shurooq and Foster + Partners

Interior Design – Public Space

House of Wisdom
Shurooq and Foster + Partners

People's Choice Award

Casa Play
FAR Architects

Sponsors

Artemide®

 **COSENTINO®**


RATTANHOUSE


The Wellness Company™

Fit Out Partner



Gifting Partner

diptyque
paris

Flower Partner

[G O] F L O W E R

Presented by





LUXURY OUTDOOR LIVING
www.rattan-house.com

 [rattanhousefurniture](https://www.instagram.com/rattanhousefurniture)



A serene escape

The Dubai Edition offers a calm retreat in the heart of the city's urban centre

WORDS BY AIDAN IMANOVA
PHOTOGRAPHY BY NATELEE COCKS

Set in the heart of Downtown Dubai is the region's newest (and second) Edition hotel, designed by Dubai-based LW Design Group – who have gone against the grain to create an understated, minimalist property that defies the outwardly luxurious hotels the city has come to be known for. In true Edition fashion (the hotel describes itself as an 'anti-hotel chain'), the design is perhaps not what one would expect, yet it is noteworthy for its simplicity and allows one to truly pay attention to the details that matter – such as its materiality, architectural forms and intimate ambiance.

Created in collaboration with Ian Schrager Company in New York, the team at the LW Design Group was at the helm of both The Dubai Edition's architectural design and interiors, a feat of firsts for the regional hospitality design connoisseurs. "The Dubai Edition is understated and represents exquisite luxury, attention to detail and [boldness]," says Jesper Godsk, founder and CEO of LW Design Group. He adds that today, the sophisticated traveller is the norm and not the exception – and with that comes a rewriting of what luxury and sophistication mean in a hospitality space.

"It was more complicated than we thought to create something effortless while still creating something that would have the biggest impact in the market by being completely different," says Pooja Shah-Mulani, design director at LW Design Group.

The 100-metre-high hotel tower sits atop a podium rotated 45 degrees off its axis in order to maximise views over the nearby Burj Khalifa. While the structure responds to the urban grain of the city, its warm materiality sets it apart from the surrounding landscape. The façade is crafted by blending bronze screens, subtly textured grey cladding and natural stone and timber. The natural

colour palette further accentuates the glazed frontage. Every room at the hotel extends outside with a large, glazed balcony, adding a sense of rhythmic dynamism to the building. The floor-to-ceiling windows emphasise the sculptural internal double- and triple-height spaces, filling them with light. "The design is guided by simplicity and sophistication, free of ornament and yet luxurious in [international standing]," says Colin Doyle, partner and lead at LW Design Group.

Inside, a journey through spatial volumes marks the space – including an arched ceiling featuring an impressive chandelier that grounds the triple-height volume. The layered lobby area is as unimposing as it is dramatic, with carefully planned warm lighting designed in collaboration with London's Isometrix studio creating an atmospheric interior throughout. At night, the lights are dimmed even further and enhanced with sensual candlelight. The lighting is focused on eye level to draw guests even deeper into a cosy cocoon. This approach is applied throughout, whether it is the comfortable pockets of seating in the lobby, the subdued lighting in the bedrooms or the atmospheric illumination in the bar and dining areas.

As with every Edition hotel, a central spiral staircase connects the lobby to the rest of the property. Revealing a triple-height cascade, the staircase is covered in Venetian plaster, and creates a statement within the overall space.

The effortless luxury of the lobby continues into the formal dining area, the Duomo Restaurant, now featuring pops of yellow to accentuate the spatial shift. The clever seating layout affords each diner uninhibited views of the arched ceiling, which features an immersive artwork designed by Onion Lab in Barcelona. High-quality projectors have been installed in the walls to map the digital art on the domed surface, the first of its kind for the Edition brand. ►►







The hotel's signature restaurant, Jolie, is filled with a showcase of natural and earthy colours and materials, from bronze finishes and tan hide chairs to the raised olive and gold chairs lining the U-shaped bar. Parlour palms and other tropical plants are scattered across the space, offering a sense of privacy, while the terrazzo flooring acts as the statement design element of the overall restaurant. The expansive semi-enclosed balcony-inspired terrace is covered, with artworks by Landon Nordeman adorning the walls.

The Dubai Edition has 275 rooms and six different room categories, including a penthouse suite, which have all been completed using a unified design language featuring the same high-quality materials, used both in the bedrooms and bathrooms. The material palette is kept minimal, with a limited selection of finishes following the brand's stipulations on simplicity and comfortable luxury, using light oak wood and stone accents that flow from one room to the other.

The simplicity of the design immediately brings attention to the minute details such as the matching veins in the natural stone and wood, which was

a time-consuming and complex feat to achieve. Each piece was hand-placed and considered so as not to repeat the bands. Each bed features a soft leather headboard, while timber-lined walls offer an overall luxurious warmth to the space. Unconventionally, the rooms are free of artworks besides a piece by Carole Bénitah, inspired by the Dubai Fountains, that depicts a young girl dancing in the water.

The hotel's spa is very small, with only two treatment rooms, a sauna, a steam room and an outdoor swimming pool, completed using soft-coloured materials such as travertine and timber.

The landscaping of The Dubai Edition was designed by Madison Cox from the USA, who has crafted dreamy outdoor spaces, gardens and terraces. The densely populated plants create intimate spaces throughout the gardens, punctuated with bold terracotta pots and olive trees. When fully immersed in the distinct atmosphere of the hotel, it almost feels as if one has escaped Dubai's urban sprawl – until looking up from infinity pool to the spectacular sunset that bathes the city in a golden light. ¹⁴



A summer dream

In Barcelona, interior designer Szymon Keller has created an apartment inspired by the Mediterranean in a contemporary way

WORDS BY KARINE MONIÉ
IMAGES BY MARINA DENISOVA





'Jaguar' painting by Albert Madaula; *Lung* red small -table, designed and manufactured by Szymon Keller; next to the sofa, small *Zaida* table by Si Atelier; *Daphne* floor lamp by Lumina

Located in the district of Eixample, in Barcelona, this project evokes “a summer night, at the sea, under the moon,” as interior designer Szymon Keller describes. Created for a couple in their 30s – who moved from Russia to Spain a few years ago, and are also at the helm of a vegan restaurant – the 60-square metre apartment is nestled in an 19th-century building. With its sloped floors, crooked walls, deteriorated ceiling and small rooms that lacked natural light, the space needed a complete makeover.

“The challenge was to resurrect this apartment, transforming it into a fresh and bold place, reflecting the owners themselves,” says Keller. “Before planning the redistribution, it was necessary to reinforce the floor slab and roof, mounting new beams and realigning the walls, as well as installing new windows.” Once done, the interior designer focused on creating areas that flow together.

The main open space comprises the living room, kitchen and dining room, while the bathroom acts as both the centrepiece and a transitional area leading to the bedroom at the back of the apartment. “It is a place that sets a middle ground between the public day activities and the more intimate activities in the daily life of the owners,” says Keller. Contained between two arches that mark its symmetry, the bathroom is adorned with bluish green ceramic and a large copper bathtub, and feels like a spa filled with natural light, thanks to the sliding doors in textured glass. In the apartment, the only enclosed space consists of the shower and toilet. ►►



Ceiling lamp by Santa & Cole; chairs
by Fest Amsterdam







Sunburst sconce by Szymon Keller;
vintage 70s table lamps from
Barcelona shop, Armando de David

In every nook, warm colours and natural materials refer to the Mediterranean and its magic light. All the walls, including the Catalan vaulted ceilings, are clad in sandy stucco, while the terrazzo floor is made of small stones. Keller installed an off-white oak parquet carpet in the living room and bedroom to add a sense of warmth. Lacquer (such as that on the wardrobe doors in the dressing room), marble and linen, among other materials, bring in even more textures. Every element reflects a nostalgia for summer through a conceptual interpretation. “This project was born as a dream’s vision, an ephemeral memory transformed into a timeless experience,” says Keller.

Giving the feeling of a hotel suite, the apartment features curved shapes and organic

silhouettes throughout. The interior designer was inspired by the small waves of the sea, reinterpreting them into “a stream of refined modernity by applying noble and natural finishes,” he explains.

Several pieces were designed by Keller, including the *Sunburst* sconce in resin, neon and iron. “This lamp celebrates the symbolic prominence of the sun and the dual relationship between light and darkness,” says the designer. “It captures the ephemeral moment that is a sunset. It is the result of an artisanal and experimental work, with different levels of transparencies and shades of amber.” Made of compressed paper, fibreglass, resin and white cement, the console and coffee table are both part of the *Ruins* series, designed and

manufactured by Keller. “It is a conceptual work based on a dialogue between construction and deconstruction,” he says. “They are forms with nostalgia for the deterioration and decay of architectural and natural elements, pieces that blur the limit between human footprints and nature.”

Vintage bedside lamps from the '70s, artworks by Paul Bik and Albert Madaula, chairs from Fest Amsterdam, the *Daphne* floor lamp from Lumina and the *Basket* pendant lamp from Santa & Cole complement the calm and unexpected atmosphere, which is shaped to provide a visual and tactile experience. “The general idea of the concept was to conceive a balance between the warm feeling of the Mediterranean and a unique and daring contemporary design,” concludes Keller. ¹⁴

A sensible approach

Designed for two photographers by Heju Studio, this small apartment in Paris marries functionality and aesthetics through every architectural and decorative detail

WORDS BY KARINE MONIÉ
IMAGES COURTESY OF HEJU STUDIO

“Our projects are the result of a deep spatial and functional thinking, consistent with the essence of the place and the lifestyle of our clients,” say Hélène Pinaud and Julien Schwartzmann, the creative French minds behind interior architecture studio Heju. The young duo met while they were studying in Strasbourg and, after graduating, they decided to launch their studio (six years ago) in Paris. Since then, they have been expressing themselves through private and commercial projects, which reflect Japanese and Scandinavian influences through timeless and poetic spaces. While the colour white is the base of their work, Pinaud and Schwartzmann introduce colours to create contrasts and highlight a specific shape or architectural elements, striving to bring to life atmospheres that awaken all senses and create emotions. “For us, beauty lies in the simplest details,” they say.

Located in the lively 11th arrondissement in Paris, this 45-square metre apartment with a balcony is situated on the fifth floor of a typical Haussmann building. For their first home purchased together, the young couple of Parisian photographers trusted Heju Studio to renovate and reorganise the different spaces. The star-shaped plan comprises an entrance/corridor that gives access to the bathroom (which used to be the kitchen), a separate toilet, the bedroom and the main living area consisting of the living room, dining area and kitchen.

“Originally, the main living area was divided into two, and we chose to open it entirely in order to make the most of the volume,” says Pinaud. “We also added a rounded wall in the entrance (that you can see from the other side of the bathroom) to create free-flowing spaces.” >>



Bookshelves feature Argile Grisée painting by Argile; Pols Potten stool; lamp on the fireplace by Lisa Allegra



Pond mirror by Ferm Living; Double Nuvo! sconce by Contain; zellige by Mosaic Factory



Grès painting by Argile and Milano by Argile; Olie scone by Amande Haeghen; made to measure dining table; chairs by Marcel Breuer and Olavi Hänninen; Ikea kitchen; Mini Glo-Ball sconces by Flos





Made to measure desk; Breuer chair
Fragment scone by François Bazin




Graphique No. 13 wallpaper by Maison
Baluchon; Charlotte Perriand scone

Optimisation and personality were at the heart of the concept. “The client wanted a minimalist apartment with colourful touches and natural materials,” Schwartzmann says. “We were completely aligned in terms of inspirations.” Warm and soft tones prevail, while pops of colour visually divide the space. This is the case in the office nook that connects the living room to the kitchen, and with the green ceiling that delimits the area where the couple eats. The stone flooring with a shower in zellige in the bathroom, the terrazzo in the kitchen, waxed concrete in some parts of the walls (including the alcove in the bedroom) and the two types of wood (oak and walnut) are intended to develop patina over time for added character.

“As the apartment is small, we wanted to create an intimate architecture, [and] a comforting and minimalist cocoon at the same time,” the interior architects explain. “We were inspired by the work of designer Frédéric Pellenq. We actually installed the handles

he designed on the doors of the bookshelves in the living room.”

In addition to the furniture and lighting pieces by Ferm Living, Marcel Breuer, Charlotte Perriand, Flos and Contain (among other names), the duo designed a made-to-measure dining table specifically for this project. “We wanted feet with a light texture,” they say. “It took us time to find the right effect and balance, but we are very happy with the result.”

Through their sensible approach, where raw and minimal elements mix with strong lines and soft hues in a calm ambience, Pinaud and Schwartzmann reflected the owners’ personalities. “We found the tones of their films and photographs,” the interior architects say. “Our client didn’t want any light coming from the ceiling because, according to them, it doesn’t create a beautiful light. So we had to find other solutions and we did it through many sconces and table lamps.” Always transforming constraints into opportunities, Heju Studio masters the art of simplicity in their own way. 



Rico sofa by Ferm Living

Outdoor living

With the cooling down of the summer heat, many are turning their attention to spending more time outdoors. And with myriad delightful options available in outdoor furniture, *identity* rounds up the latest collections that have us wistful for those breezy days in the garden



Dedon



Ethimo



Roche Bobois

DALA by Dedon Dedon's signature *DALA* collection, comprising of circular lounge elements, has been given a facelift with a new set of colourways created in collaboration with colourist Giulio Ridolfo. American designer and educator Stephen Burks created *DALA* to be easy-going yet crafted with delicate artisanal detailing that is characterised by an innovative (and patented) weaving style which gives it its distinct personality. The collection also includes a club chair and plush new seating options, all available in the new colour combinations. The new chair lends itself to low-lying dining areas or relaxed drinks by the pool and can be combined with Dedon's modular sofas to create fresh and elegant lounge settings.

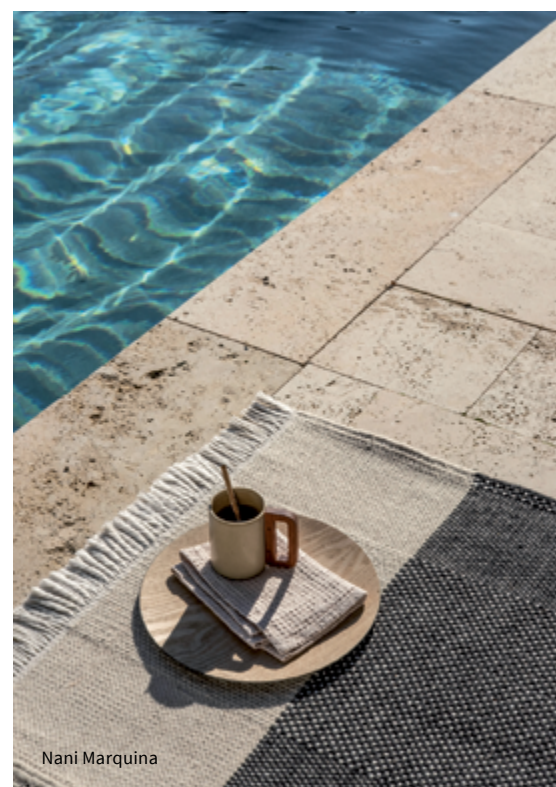
Rotin by Ethimo A collaboration between Ethimo and Studio Zanellato/Bortotto has brought to life the *Rotin* collection, comprising a pickled teak structure inspired by the Asian tradition of using bamboo as a signature element for outdoor furnishing, combined with techniques normally used in the production of rattan furniture. 'Tubes' of warm pickled teak joined with nautical rope embrace the seats, highlighting their contours and creating the structure of the coffee tables. The collection is further emphasised by fabrics in bright hues combined with unique patterns and detailed craftsmanship.

Tres by Nani Maquina First introduced five years ago, Nani Maquina's most successful collection, *Tres*, is now suitable for outdoor use. Made with 100% recycled PET fibre, the collection pays tribute to the millenary craft of weaving and is defined by three independent pieces seamlessly joined together, creating a rug that features a combination of colours and textures. Designed

in collaboration with Elias Padron, the two new pieces in the collection, which include *Tres Black Outdoor* and *Tres Salvia Outdoor*, take the concept of the rug back to its basics.

2021 outdoor collection by Roche Bobois Roche Bobois' latest outdoor collection is designed for the bold and has all the makings of a fun evening entertaining guests, but is also equally ideal for an afternoon lounge by the pool. The collection includes a modular sofa, lounge chairs, tables and poufs, each one created in an array of daring hues. No doubt, a favourite in the collection is *Informel*, consisting of two sofas and two armchairs designed by Hans Hopfer. Wrapped in a stretch fabric called Sunrise, which was specifically designed for the outdoors, the exclusive textile is soft and elastic and embraces all the angles of the sofa while remaining plush, comfortable and welcoming in its design.

Shibui by Paola Lenti Designed by Francesco Rota, Paola Lenti's *Shibui* series is the minimal outdoor furniture we have all been looking for, and includes an armchair, a chaise lounge and a suspended platform. Some of the materials, such as the bamboo, will mature and develop patina over time, changing in colour, compactness and texture. And while this may not be for everyone, to us the natural aging of the material is part of the beauty of the collection.



Nani Maquina



Paola Lenti

Dubai Design Week

A renewed outlook

While events in the design calendar continue to make a comeback as the world opens up to international travel, the region's staple design event, Dubai Design Week, continued in its renewed spirit to introduce brands, products, designers and proposals that tackle a newly ordered world where design continues to seek novel solutions. This year, one theme stood out and that is using design as a tool for reflection, be it on the way we live, the things we live with or the kind of world we would like to be a part of in the future. Attention was paid to materiality, conscious and local production, and the necessity of slowing down to fully understand one's surroundings.

In the following pages, *identity* highlights some of the products, designers and installations that were on show at the sixth edition of Dubai Design Week.

Entangled Matters by Adrian Pepe

This year, the programming at Dubai Design Week spotlighted rising and established talent from Lebanon with the aim of supporting its design community amid a struggling economy. One of such projects was the Beirut Concept Store, curated by Mariana Wehbe, which brought to the fore the diverse talent existing in Lebanon today. While the chaotic exhibition of sorts presented a number of promising works, one designer stood out. Honduras-born and Beirut-based textile designer Adrian Pepe's 'Entangled Matters' project explores the ancient animal fibre of the Awassi wool that has been bred in the region for over 5,000 years. 'Entangled Matters' exposes the process of cultivating wool, through dyeing, spinning, braiding, hand-guided embroidery and felting, transforming the material into artefacts that are laden with narrative, symbology and intimacy, highlighting the association between craftspeople and the object. Working directly with local shepherds and craftspeople, the series of works explores centuries-old modes of production that forge an intimate relationship with the wool material. With the introduction of synthetic alternatives and better-quality wool from other parts of the world, the wool of the Awassi sheep is being discarded, Pepe says.

"There are approximately half a million sheep in Lebanon alone, which produce almost 1,000 tonnes of wool every year," he says. "We want to look at pre-industrial modes of production because it is the only way we can create a more intimate relationship with objects in general; by understanding the sentient provider that gives us the raw material. And the only way of understanding it is by getting your hands dirty, to put it simply. This also creates a culture of care."

He continues: "I think it is important to expose the process in order to develop intimacy. Today, I think there is an anguish in people not being able to relate to their surroundings because their surroundings are so fabricated, so there is this desire to understand the roots and the history of how things came into being, and you see that in younger generations, specifically. Today, we also see this proliferating in the art and design worlds."



Context Reflections by Anarchitect and Cosentino

A 'slow-tech' public installation called 'Context Reflections' by architectural surfaces brand Cosentino and Dubai and London-based design practice Anarchitect was unveiled during Dubai Design Week, posing a deflection to the overbearing amount of information and technology one is exposed to on a daily basis. The installation creates an opportunity for visitors to engage in introspective contemplation, reflecting on the importance of natural light, the environment, social behaviours and a responsibility to preserve what is important.

Built using Sunlit Days, the first-ever carbon neutral surfaces collection from Silestone by Cosentino, the installation invites visitors into a darkened chamber to discover the intriguing play of penetrated light created via "a naturally occurring optical phenomenon". The self-operating, analogue installation draws inspiration from the principles of 'Camera Obscura', where the moving images conjured on the inside wall are inverted 'live' projections of the environment outside its walls, urging one to reflect on the constantly changing environment.

"[The installation aims to] raise our sustainable collective consciousness by going back to basics and calling for the observation of the contexts that surround us, here purposefully using a low-tech, full-scale analogue design tool," says Jonathan Ashmore, founder and director at Anarchitect.

"It was important to us that the installation was designed mindfully, with minimal material wastage, and is a demountable, reusable structure to give it the possibility of a second and even third life," adds Matt Harding, another member of the Anarchitect design team behind the project.

In its essence, Context Reflections asks the user to consciously pause and observe, instead of simply snapping a photo before moving on to the next thing.





Modu by Omar Al Gurg

Emirati designer Omar Al Gurg has launched his furniture design brand Modu, exploring human behaviour and one's interaction with objects and space to encourage a design which can create bonds and hold sentimental value between user and furniture. Short for the word 'modular', Modu's pieces are multi-functional and created to grow with time, and inspired predominantly by the mid-century era, enthused with quirky elements. The first two

objects in the series includes the *Gene* side table and the *Spike* hanger. True to its 'modular' moniker, *Gene* – while being a side table – can also be separated to create two stools with a small space that can be used for the storage of small items. The furniture piece can also be stacked in a manner that would in turn create columns for display or more storage, if needed. The piece is inspired by compact living and functionality and asserts itself with the ethos

of the brand. *Gene* is made with walnut wood, Dabema, natural ash and black stained wash. *Spike* further echoes *Gene's* functional modularity. Made in solid wood that is perforated throughout to allow the user to play around with the pegs and place them where they best see fit, the design is defined by its versatility and convenience, allowing the user total freedom in customising the piece based on their specific needs.

Kapok by Tasnim Tinawi

Presented as part of Tashkeel during Downtown Design, young designer Tasnim Tinawi's *Kapok* collection's chair and footrest feature an upholstered cushion draped on a curvilinear steel frame, made from a sheer fabric that is stuffed with a new material developed by the designer, called Desert-Cotton. The collection is part of Tinawi's research of how organic resources from local shrubbery and ground cover can be transformed into sustainable materials. As a result of this research, Tinawi has experimented with over 50 species by collecting, cleaning and treating waste organic material, focusing specifically on a common native shrub called *Aerva Javanica*. "From this native species, I was able to collect its shed flower buds that seasonally fall in large amounts. I have then intensively treated the collected material to create Desert-Cotton as a stuffing for a variety of applications," she explains.

Desert-Cotton is the first locally sourced natural stuffing in the UAE, she says, which

is beneficial "considering that the shrub itself uses exponentially less water and grows in saline soil environments."

Using iterative prototyping, the form of the seating and footrest is naturally derived from the behaviour of the stuffing itself. The tight tubular pattern allows the stuffing to freely flow while controlling its movement within the cushion.

"As a result, the idea behind the series was to create a plush seating that would allow the user

to comfortably sink into [it]. Working with an unprecedented material pushed the boundaries of design [while maintaining] a keen focus on functionality," Tinawi says of the project. "I am currently taking this developed material further by prototyping it for other applications in the upholstery industry, while also working with another common species of shrubs. I am hoping that it could be even more improved through developing it as stuffing."



ReFormia by The Line Concept

For its third capsule collection, called *ReFormia*, The Line Concept challenges traditional shapes in furniture through asymmetry, organic lines, unconventional angles and elements that evoke movement and interaction between users. All of The Line Concept's collections are handcrafted by their in-house team using a set of materials such as solid woods, genuine marble and antique metals to create designs that are timeless and alive in their materiality. The new collection also utilises stone and glass. Some of the highlights of the collection include *Trefoil*, a playful take on a side table that is also sculptural in form and plays on themes of spheres to create an almost floral composition. *Trefoil* is designed in natural oak and travertine in a bold

rust colour. Another stand-out piece is *Flow*, which is an evolution of the brand's *Guild* table, reformed into an asymmetric and organic design while maintaining the signature gilded brass plates on the leg façades of its earlier counterpart. Additionally, keeping to the theme of breaking convention is the *Speculum* mirror that reenvisioned the traditional standing mirror as a sculptural art piece, and is designed to include different shades and formal options. The *Aura* console is also a notable piece in the *ReFormia* collection that plays on asymmetry from every angle at which it is viewed. The focus on its transient shape is permitted through its uniform colour, contrasted with a sliced top gilded with a full brass surface.

Kinoko & Kimoki by Monochrome

Handcrafted locally in limestone, the *Kinoko* and *Kimoki* coffee tables mark the launch of the limited edition collection by Monochrome, and are the first product pieces in the brand's product line. The collection explores the paradox of working with a rigid material, and intends to create the opposite result of soft and organic forms. Launched at Downtown Design this year, Monochrome Studio is a design practice that has set out to create empathetic spatial experiences by focusing on refinement and sustainable elegance.

"Our process involves designs guided by intrinsic instinct, providing distilled

forms that are built on the premise of 'simplicity with soul'. We aim to amplify and connect with an individual's emotions by tapping into the symbiotic relationship between a person and their space," says founder Maria Erasquin.

The brand's product design arm seeks to create objects that arise from the exploration and requirements of its projects, questioning the paradox between materiality and form by simplifying complex structures into simple shapes. "This research allows [us] to explore and push boundaries of local production and craftsmanship," Erasquin adds. ¹⁴



Luxurious comforts

This holiday season we are keeping our eyes out for unique pieces for the home, whether to enjoy a good book on a cosy reading chair, enjoy some fresh juice, or spritz ourselves with a gorgeous fragrance designed by a world-renown starchitect

Ila armchair
Patrick Jouin for Pedrali
Available at pedrali.com



1. Meta side table by New Tendency. Available at newtendency.com **2.** Equatore table lamp by Fontana Arte. Available at designitch.com **3.** Les Extraits perfume bottle designed by Frank Gehry for Louis Vuitton. Available across Louis Vuitton outlets. **4.** Plissé juicer by Alessi. Available at alessi.com **5.** Feast serving plate by Ottolenghi for Serax. Available at matchesfashion.com **6.** Nur mirror by Zanat. Available at matchesfashion.com

Towards a brighter future

Seven volumes published by Assouline document the architecture, inspiration and historical significance of Expo 2020 Dubai



From October 2021 to March 2022, people from across the globe will come together in Dubai to celebrate the World Expo, which has brought together over 200 participants. Millions have already entered through its monumental gates, designed by architect Asif Khan.

With 192 country pavilions, three thematic pavilions – Opportunity, Mobility and Sustainability – and numerous awe-inspiring feats of architecture and craftsmanship at every turn, Expo 2020 Dubai offers limitless opportunities to learn, reflect, connect and collaborate for a better world, while bringing together a shared mission towards building a cleaner, safer and healthier future.

To mark this achievement, Assouline has collaborated with Expo 2020 on seven unique volumes dedicated to the event. Four editions of the book have already been published, while three more volumes are planned for the spring of 2022. Each book features original images, texts,

exclusive interviews and insights into the architecture, inspiration and historical significance on display at Expo 2020. Published and edited exclusively by Assouline and Expo 2020 Dubai, each of these seven editions are set to be valued by collectors around the globe.

“The volumes showcase the story and thinking behind Expo 2020 and how connecting its themes, storytelling and experiences have enriched its architecture,” says Dr. Federica Busa, senior vice president, Visitor Experience, Expo 2020 Dubai. “Like the buildings themselves, the books will set new benchmarks for the future, forming an essential record of Expo’s meaningful, lasting legacy.”

The four published books include *Terra – The Sustainability Pavilion*, *Alif – The Mobility Pavilion* and *Mission Impossible – The Opportunity Pavilion*, chronicling the three themes of the Expo 2020; as well as *Site, Themes, Architecture*, which offers a comprehensive exploration of the overall Expo site, journeying through its iconic architecture and spaces, from pavilions and programming to the public realm and beyond. With essays written by a variety of contributors offering a detailed view of the ideas and meanings behind the themes and architecture at the Expo, the title is both a tribute to the participants and a special memento for its visitors.



Photography by Dany Eid



identity.ae

The latest architecture, design + interiors news, now online



@identityae

Designed with Norm Architect's restrained approach, the *Cask* collection for Expormim is inspired by classical round-shaped furniture and features two rounded pieces of rattan that are merged together. The dynamism that the two circumferences offer the structure is mollified by the temperance of the colour palette, with various rattan finishes and textiles in bold and uplifting versions allowing the versatile collection to fit the mood of any contemporary space.



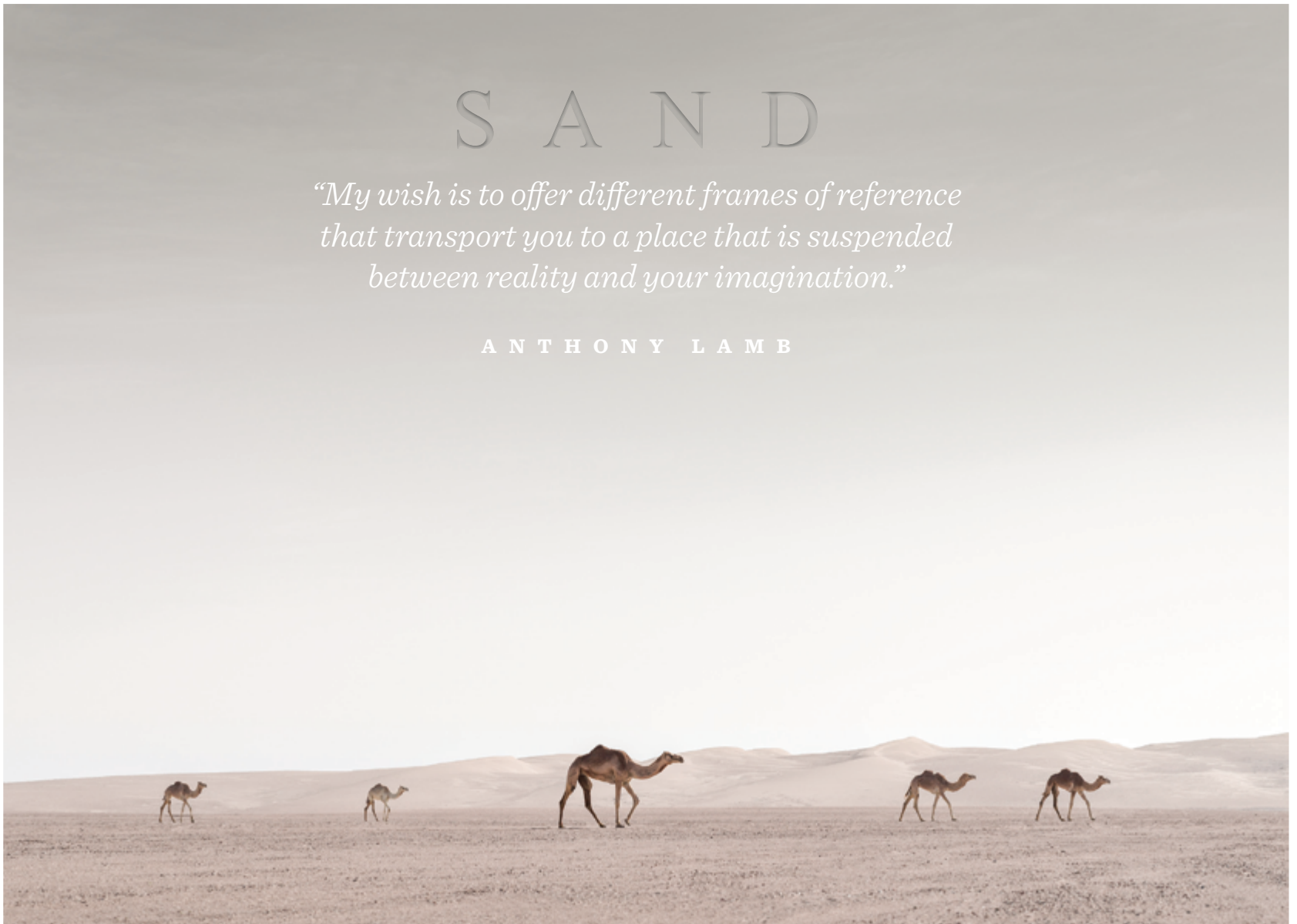
Cask by Norm Architects for Expormim

Discover the serene,
ethereal desert landscape
through this beautiful
collection of images

S A N D

*"My wish is to offer different frames of reference
that transport you to a place that is suspended
between reality and your imagination."*

A N T H O N Y L A M B



FIND THE BOOK AT ALL MAJOR RETAILERS ACROSS THE UAE AND ON BOOKSARABIA.COM



booksarabia.com

www.motivatemedia.com



MOTIVATEBOOKS



MOTIVATE_BOOKS



MOTIVATEBOOKS

THG[®]
P A R I S



© THG PARIS 2021

HIRONDELLES

LALIQUE

THG PARIS - MIDDLE EAST
Dubai Design District - Building 3, Office 605 - Dubai, UAE
contact.me@thg-paris.com

WWW.THG-PARIS.COM